

Guidance for Colorado Schools About Storage and Disposal of Nicotine Waste

The use of electronic nicotine devices/vapes by youth is a serious health concern and a disruption to learning. Proper disposal of confiscated electronic nicotine devices/vapes can reduce the risk of nicotine exposure on school grounds.

Keep Your School Safe From Hazardous Nicotine Waste Materials Found In Vape/Electronic Smoking Devices And E-Liquid By:

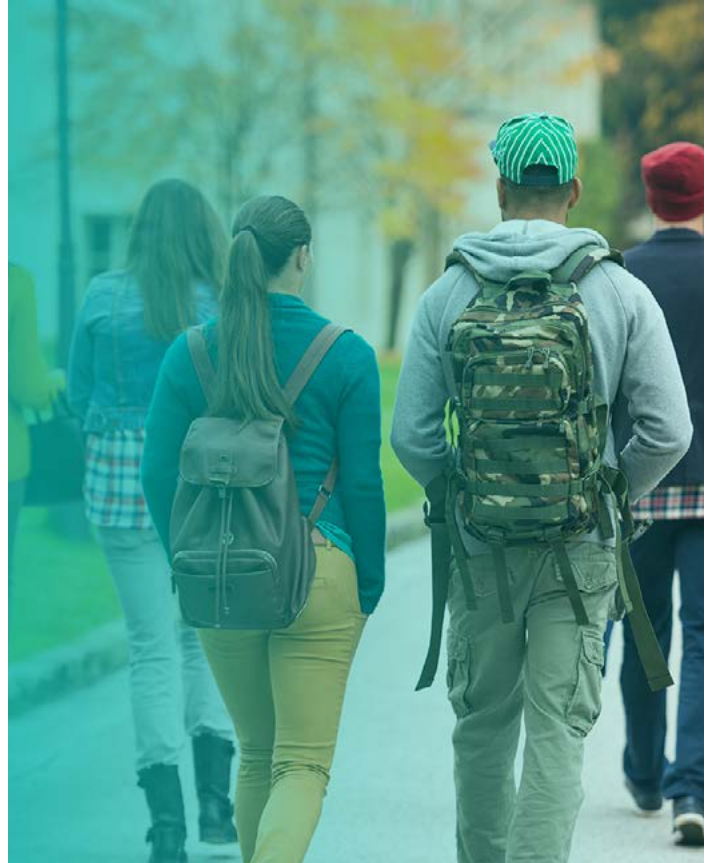
- Collect nicotine waste and store it in containers made of, or lined with, materials which will not react with the hazardous waste collected.
- Labeling or marking containers with the words "Hazardous Waste".
- Storing containers in a safe place and in a manner that avoids leaks until they can be properly disposed of.
- Keeping the storage limits of nicotine waste to less than 2.2 pounds.
- Sending containers to an off-site facility authorized by Colorado Department of Public Health and Environment for hazardous waste. For more information, contact the solid waste authority in your community.

Examples Of Nicotine Hazardous Waste That Should Be Disposed Of Properly In The Appropriate Containers:

- Vaping liquid that contains nicotine.
- E-cigarettes (i.e. Puff Bar, Juul, Vuse or Mod type) , whether used or not, unless the vaping liquid reservoirs have been removed.
- E-cigarette cartridges (i.e. Juul pod) that held nicotine vaping liquid, even if they look empty.
- Vaping liquid spill and cleanup materials.

Never place nicotine-containing waste into the typical trash. These items are harmful to the environment when disposed of incorrectly.

Waste containing any concentration of nicotine is considered acutely hazardous.



The Colorado Department of Education and Colorado Department of Public Health and Environment, [recommend schools](#) confiscate electronic nicotine products (i.e. Puff Bar Juul, Vuse, and Mod type) as one of the best practice strategies to address the youth vaping epidemic and to enforce the [Colorado Tobacco Free Schools Law](#).

Consistent implementation of all recommended best practices ensures equitable enforcement of the law and supports the tobacco free school laws across the state. For more information on recommended strategies to prevent youth tobacco use and to implement the tobacco free schools law visit <https://www.tobaccofreeco.org/>



Nicotine-Containing Waste And E-Waste Disposal Facilities Authorized By Colorado Department Of Public Health And Environment:

Boulder County Hazardous Materials Management Facility

1901c 63rd Street,
Boulder, CO 80301
(720) 564-2251

Pitkin County Solid Waste Center

32046 Jack Gredig Lane
Aspen, CO 81611
(970) 429-2880

Eagle County Solid Waste and Recycling

815 Ute Creek Road,
Wlcott, CO 81655
(970) 328-3470

Rooney Road Recycling

151 S. Rooney Rd.
Golden, CO 80401
(303) 316-6262

Larimer County

5887 S. Taft Hill Road
Fort Collins, CO 80526
(970) 226-1101

Weld County

500 State Hwy 52
Erie, CO 80516
(970) 304-6475 ext.2226

Mesa County Hazardous Waste Collection Facility

3071 US-50
Grand Junction, CO 81503
(970) 256-9543

FAQ

For questions about hazardous material disposal and storage.

Contact the Colorado Department of Public Health and Environment

My community does not have a waste facility listed that collects nicotine-containing hazardous waste. Whom do I contact?

Hazardous Materials and Waste Management Division

Customer Technical Assistance
 (303) 692-3320
 (888) 569-1831 ext. 3320
 E-mail: comments.hmwmd@state.co.us
www.colorado.gov/cdphe/hm

Where can I get a safe storage container?

Contact a hazardous waste vendor.

What should I do with non-nicotine containing e-liquid/e-cigarette devices?

Consider all devices, components and vaping liquid as a hazardous waste to ensure safety and proper disposal.

Who pays for the cost of storage and disposal?

Schools that are unable to pay for proper disposal should contact the local public health department and Hazardous Waste Recycling facilities to discuss cost-sharing or cost-cutting strategies.

What should I do about other waste from these devices and components?

Batteries from these devices are considered a “Universal” waste and should be managed in a way to prevent releases to the environment. Batteries should be stored in a universal waste accumulation container and must be labeled with the words “Used Batteries”, “Waste Batteries” or “Universal Waste Batteries”.

Please **do not** attempt to disable/ disassemble any Electronic Smoking Device.

How do I collect and stay under 2.2 lbs of devices, components or e-liquid?

Example: With the proper container weigh out 2.2 lbs of devices, components and e-liquid (total weight)

For additional help contact your school environmental waste/services, local Public Health Department and/or Colorado Department of Public Health and Environment Hazardous Materials and Waste Management Division.

FAQ

<p>For questions about exposures to nicotine.</p>	<p>Colorado Poison Control Center 1-800-222-1222</p>
<p>For questions about vaping and health</p>	<p>Tobacco Free Colorado https://www.tobaccofreeco.org/</p>
<p>For questions about prevention, intervention, and quit service support for students</p>	<p>Contact your local public health department</p>
<p>Are schools required to follow these guidelines?</p>	<p>No, but these guidelines keep your school safe from hazardous waste.</p>
<p>Can I give devices back to parents/guardians?</p>	<p>Refer to your district’s Tobacco Free Schools Policy and related policies for confiscation procedures. Never return confiscated devices containing nicotine to students.</p>
<p>Should we confiscate devices if they are hazardous waste?</p>	<p>Refer to your district’s Tobacco Free Schools Policy and related policies for confiscation procedures. The state does encourage confiscating these devices, if allowed by your district’s policies.</p>
<p>I am unsure if a device/product contains nicotine?</p>	<p>If you are unsure whether a device contains nicotine or is hazardous, place it into the designated container.</p>
<p>Where can I get help designing a safe disposal model?</p>	<p>Contact your local public health department’s Tobacco Control Program for best practice approaches. Find your local public health agency.</p>