

97%

ASSESSMENT

Coalition members share a common vision for the community

CAPACITY

Coalition members trust each other sufficiently to honestly share information, perceptions and feedback

96%

IMPLEMENTATION

Matched prioritized substance abuse needs with evidence-based policies, programs and practices

97%

PLANNING

Developed an action plan that identifies who, will do what, by when to realize targeted community changes

80%

SUSTAINABILITY

Identified what resources (e.g., supplies, space, personnel, transportation, technical assistance and funding) are required to sustain identified needs

93%

91%

EVALUATION

Developed or selected instruments and methods to assess outcomes

CULTURAL COMPETENCE

93%

The coalition demographic composition (e.g., race, ethnicity, religion, gender, age, sexual orientation, etc.) reflects the demographic composition of target community

CADCA's Annual Survey of Coalitions highlights the work of coalitions nationwide to help make community primary prevention work a priority. Coalitions participating in the annual survey provide critically needed information to inform CADCA training and technical assistance, CADCA advocacy, and evaluation and research efforts.



facebook.com/CADCA



twitter.com/CADCA

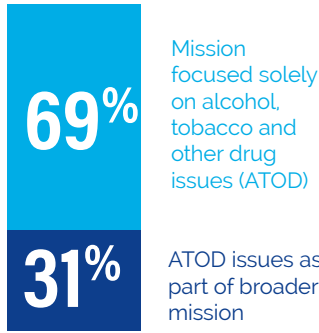


instagram.com/CADCAcoalitions

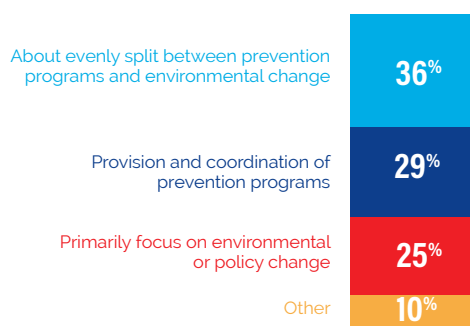
cadca.org

ABOUT CADCA COALITIONS

COALITIONS FOCUS



COALITIONS FOCUS EFFORTS ON



TOPIC AREAS COALITIONS FOCUS ON

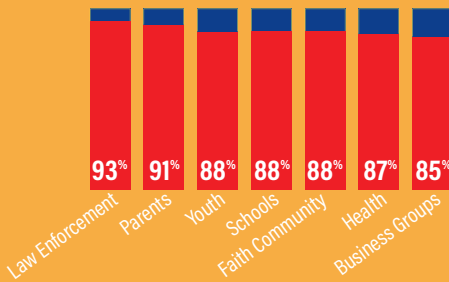


PEOPLE

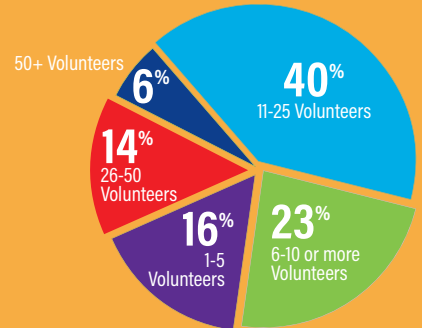
FULL-TIME PAID STAFF ON A COALITION



ORGANIZATIONS/GROUPS THAT REPRESENT ON A COALITION

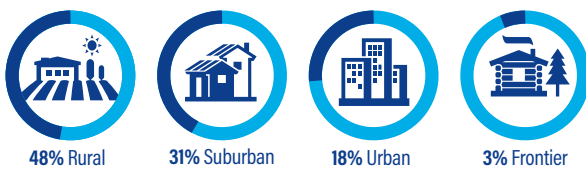


NUMBER OF ACTIVELY ENGAGED VOLUNTEERS PER MONTH



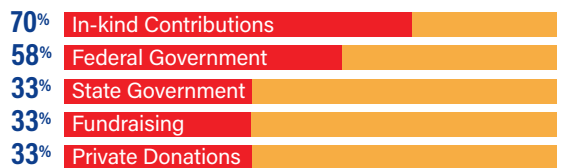
LOCATIONS

GEOGRAPHIC AREAS WHERE COALITIONS WORK



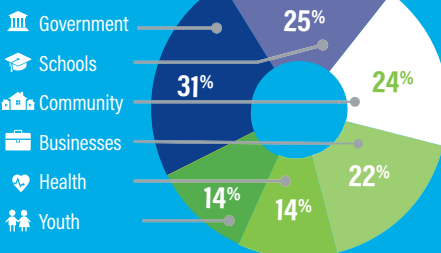
FUNDING

COALITIONS RECEIVE FUNDING FROM VARIOUS SOURCES



POPULATION FOCUS

COALITIONS WERE ABLE TO BRING POLICY/PRACTICE CHANGE IN THESE SECTORS



CHANGES WERE DIRECTED TOWARD

